

NEWSLETTER



INSIDE THIS ISSUE

Junior Choir Visit..... 2
Reading Music 3
Puzzle Page 4

The Choir Clef

Editorial:

The idea of a Choir Newsletter is not new, in fact I have very happy memories of our one when I was a Treble—although it was more like a Magazine!

This newsletter is I hope the first of many, but the idea is to make it something that all can contribute to (if people want to!)

If anyone would like to participate, it could be a short news item, a fact, a puzzle, a cartoon..... in fact anything that you want to, so long as it is readable by all choir members, older and younger alike! You can start by coming up with an alternative name, if the mood takes you.

So have a think and doodle, and email me something. Larger or small, it doesn't matter. The idea is to try and keep the team spirit up and have fun! David

Junior Choir: I would like to again take the opportunity to welcome (in print this time!) the members of our Junior Team.

Emma has been with us for a while now—when did you start Emma? She now heads the Junior Choir, as well as singing full time with the Seniors.

Alliyah joined us in the run up to Christmas and keeps us entertained well at practice! She has now settled in quite well and is beginning to learn the ropes and what it is all about.

Natalie and Poppy joined just after Christmas and were inducted officially into the choir on the last Sunday in February—along with Alliyah. They now have their gowns and are beginning to find their way around a bit—full of beans these two!

Jessica, who is Nat's elder sister' is the most recent to join us, and will be inducted shortly. She is Emma's age, so now Emma needn't feel the odd one out—if indeed she ever did.

Senior Choir: We also have an addition to our senior choir in the shape of Claire Contino, who has recently moved to Bampton with her Black Labrador (Menna, or in full—Menna the Moobilator). They both come to practice on a Friday; Claire sings Contralto, whilst Menna listens!

STOP PRESS:

Sarah & I would like to invite everyone for the annual BBQ at home on Saturday June 7th. If wanted, there will be a chance for the usual farm walk at 6pm. All others can come for the BBQ starting at 7.30pm. RSVP by Email please. All families are invited as well (as usual).

FACTOID:

*Choir (by definition).....
"An organized company of singers, especially one performing church music or singing in a church. "*

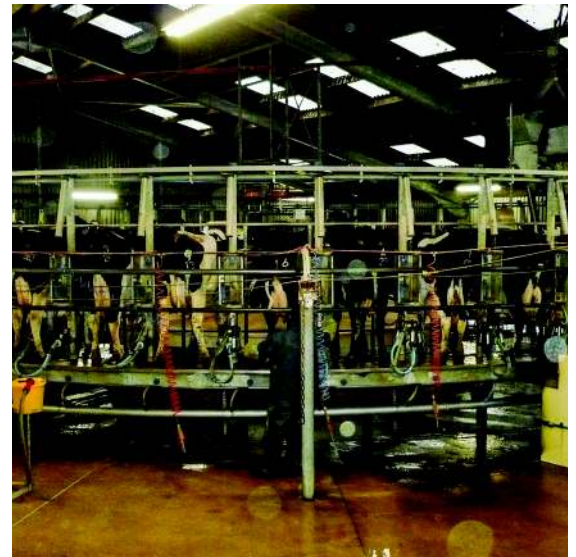
What I want to know, is who organises who?

It was Wednesday 19th of February. Four intrepid Junior Choir Members met outside the church at 1.30pm, dressed in warm clothes and carrying wellies to join Janet and myself for a trip to Kingston Hill Dairy Farm at Kingston Bagpuize.

When we got there, they were just bringing the cows into the collecting yard for the afternoon milking—all 550+ of them.

We went to have a look at the big Rotary Milking Parlour (where yours truly spends his Saturday and Sunday mornings during the winter!) Here they learnt a little bit about the parlour and how it works, what the cows do when they get there, and why it all happens.

Then we moved to the Calf Shed, where we met some baby calves, which we talked about and handled; moving from here we went to look at the bigger calves in the building across the yard.



The Rotary Milking Parlour at Kingston Hill Farm

“.....back to the Milking Parlour where afternoon milking was in full swing.”

JUNIOR CHOIR TRIP

From the Youngstock Yard, we moved around to the back of the building complex to look at the business end of the operation—the Slurry Pit (4 foot deep in the un-mentionable) and the large Silage Clamps, which hold all the conserved Grass and Maize silage that the cows eat during the winter.

We finally moved back to the Milking Parlour where afternoon milking was in full swing. Here we moved around the parlour, watching everything that was happening, whilst I explained it. We stayed in here for almost an hour (not my choice!) but I think I can truly say that the girls found it fascinating; they were very good at asking questions, and I hope that not only did they learn something, but found it interesting as well!

My thanks must go to David Christensen who owns the cows and runs the business for allowing me to arrange the visit. My thanks also to Janet for taking the time to come with us so that there was another adult present; and also for her taking the photos!

Next holiday we pay a visit to Glebe Farm, to meet the lambs whilst we are lambing—probably in the week after Easter, so watch this space!

Next holiday we pay a visit to Glebe Farm, to meet the lambs whilst we are lambing—probably in the week after Easter, so watch this space!

FACTOID:

Choir Director.....

- 1. To direct the course of; manage or control.*
- 2. To lead or guide.*

Am I missing something.....?



Discussing the Calves in the Calf Shed

FACTOID:

“Contralto”

from the Italian *contralto* "lowest female singing voice," from *contra-* "having a lower pitch than" and *alto* "a female singing voice"

Many female singers actually fall between *Soprano* and *Alto*. They are known as “*Mezzo Sopranos*”

Unfortunately for many ladies, they either have to sing *Soprano* and struggle with the top notes, or *Alto* and struggle with the bottom notes; sound familiar?

FACTOID:

“Soprano”

The highest singing voice of a woman : as opposed to a

“Treble”

The highest singing voice of a boy.

.....and they all always make the most noise in practice!!



READING MUSIC

One of the areas that the Junior Choir is working on, is learning a little bit about how to read music, and it occurred to me that some of the adults sometimes ask a question, so I thought that it might be worth trying to explore some simple music theory as time goes on (if this type of communication idea works!)

The pictures to the right should be fairly self explanatory, but here are some of the technical terms and their involvement. They relate to the notes and where they are found on a keyboard.

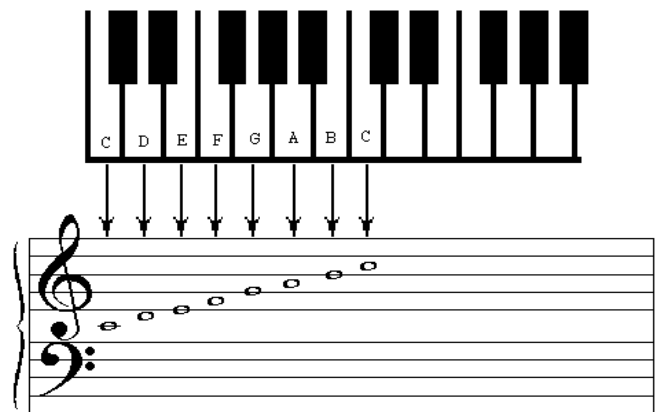
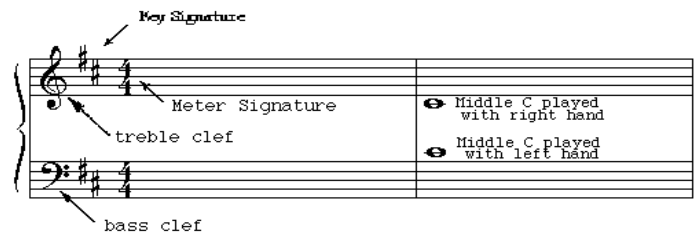
At the top of the picture are two sets of 5 lines, joined together by a bracket (on the left). The top lines depict the Treble (or Soprano line) with a **Treble Clef** shown at the start. The bottom set of lines depicts the Bass—with a **Bass Clef** at the start. Both lines together form what is called **The Staff**.

At the start of both the Treble line, and the Bass line, after the Clefs are what are known as **The Key Signature**. In this case there are 2 **Sharps** shown (#); these help tell the musician what key they are going to be singing or playing in. Sometimes these symbols can be shown as **Flats** (♭) instead; both sharps and flats normally refer to the black coloured notes shown on the keyboard in the middle of the picture. Both **Sharps** and **Flats** denote what is known as a **Half Tone**, otherwise called a **Semitone**, but more on that another time.

Lastly to complete the introduction to reading music—which is merely a mathematical code, we have to remember that each little round symbol on the **Staff** - either on a line, or between 2 lines, tells us where the note is played or sung. Each note has a name (from **A** to **G**), and if the next note is above the last, the sound made goes up, and if it is below the level of the last note, the sound made goes down. Next time (if there is one) we will look at the notes more thoroughly.

Music Page Definitions -3

Sheet Music Online



PUZZLE PAGE

FACTOID:

*Tenor voice.....
- the highest adult male singing voice in the normal voice range (above Baritone and Bass).*

Here are some puzzles to get the grey matter working, I have tried to make some easy, and some slightly harder; just for fun at the moment, but I would like to hear from you if you manage to complete them!

All Tenors believe that they are special.....!

Word Search— All the words in this puzzle are musically related. Some have been talked about elsewhere, others might be new to some people. The words can run sideways or vertically, or diagonally (either way). They can also read normally or backwards! Some may overlap. All the words to find are shown besides the puzzle.

S O P R A N O T E R
 S S A B L B E A T I
 T E H D T E N O R O
 A D M A O R K A O H
 V Y L I R F E L C C
 E F L G T P Y B H T
 S L N E O O I A L I
 O D M B N W N A L E
 L P Y A E T N E N V
 O I H R C H O I R O

Wordsearch Words to find:

- Soprano
- Alto
- Tenor
- Bass
- Treble
- Clef
- Sharp
- Flat
- Key
- Time
- Piano
- Choir
- Gown
- Lento
- Hymn
- Chant
- Solo
- Beat
- Note
- Stave
- Tempo
- Semitone
- Tie
- Tone
- Bar

The remaining letters spell the name of someone known to all in our church.

FACTOID:

*Bass voice.....
- the lowest adult male singing voice in the normal voice range (below Tenor and Baritone).*

Basses in my experience tend to be loud and do their own thing!

The following joke should be known to many of you, but it is in a simple code! Can you decode it? (It has relevance to the choir!)

